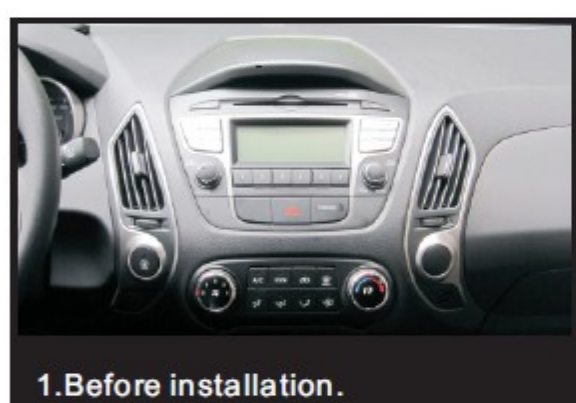


# INSTALLATION MANUAL

for HYUNDAI IX 35



## INSTALLATION MANUAL



1. Before installation.



2. Remove the hazard warning light panel, look out the clips.



3. Remove the upper plastic cover



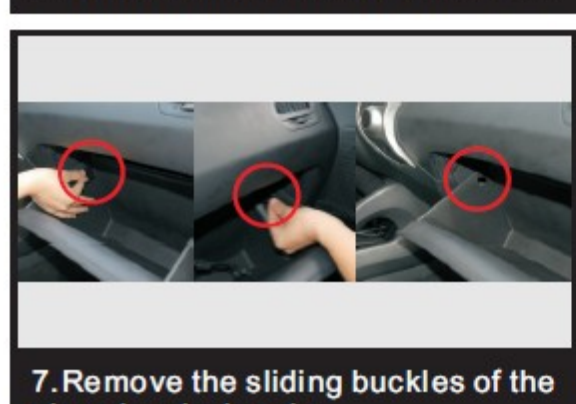
5. Take off the screws with screwdriver.



5. Take out the original unit and disconnect all the harness at the back.



6. Remove the cover besides the right door



7. Remove the sliding buckles of the glove box by hands

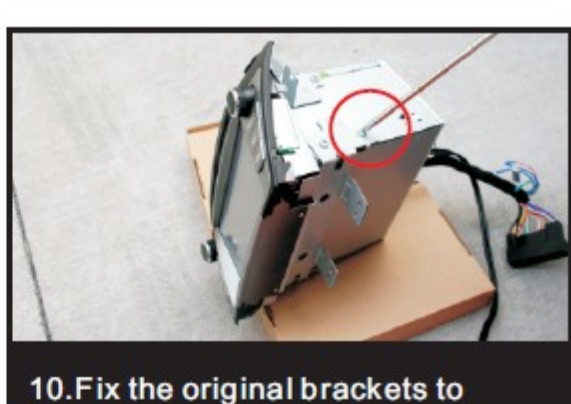


8. The way to fish GPS antenna

## INSTALLATION MANUAL



9. Remove the brackets of original unit



10. Fix the original brackets to RoadRover unit



11. Fish the USB cable through the dash board to the glove box



12. Plug the harnesses for RoadRover unit



13. Put the navigation unit into the right place



14. Tighten the screws



15. Reassemble the upper plastic cover and be care of clips



16. Reassemble the hazard warning light panel.

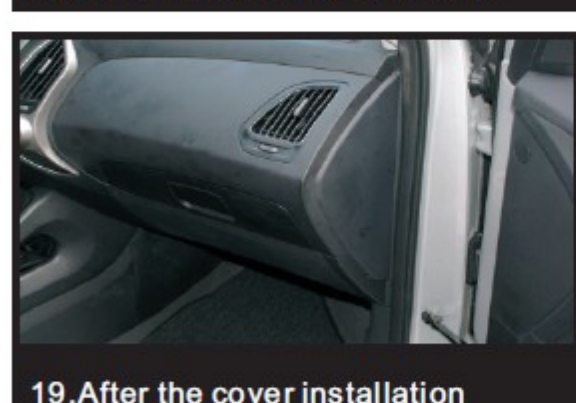
## INSTALLATION MANUAL



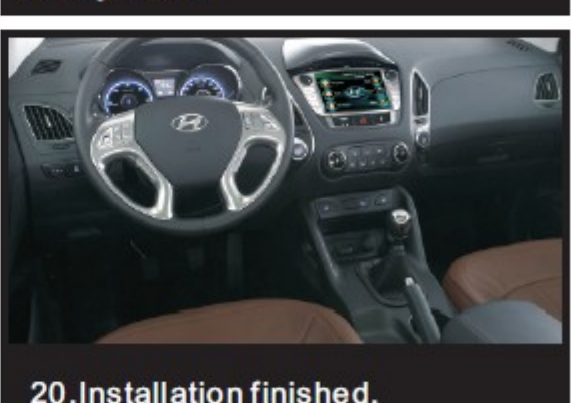
17. Reassemble the left and right sliding buckles of the glove box by hands



18. Reassemble the cover besides the right door



19. After the cover installation



20. Installation finished.

### Precautions

1. Only the professional installing technicians are allowed to install and maintain this product.
2. Installation or maintenance by the unprofessional people might cause electric shock or other risks and even damage the unit.
3. In the process of connecting, pay attention to the hook position, don't pull wires forcibly to avoid invalid connection.
4. Please use the attached wire of the system, otherwise the accident of fire or smoke or damage to the unit or vehicle might be caused.
5. Don't cut off any extra wire which is kept for future use, Protect the ends of wire with insulating tape.
6. In order to avoid short circuit, please disconnect the anode of the power accumulator before any connection and installation.
7. Ensure all lines are placed and protected in good condition, don't let them interfere in any moveable parts of the car such as steering wheel, gearlever, brake pedal, sliding chair, door or other parts.
8. The voice is input through AUX, so please ensure audio cable connects well with the AUX port of the original car audio system.
9. The Hyundai IX 35 GPS can be fit for Hyundai IX 35.